

PART OF N.E. 1/4 SEC. 35 & S.E. 1/4 SEC. 25, T.8N, R.2E., S.1.B.M.

SUNRIDGE HIGHLANDS NO. 1

LOTS 1 to 3, 12, 13, 48 to 54

TAXING UNIT: 58

IN WEBER COUNTY

SCALE 1"=100'

65

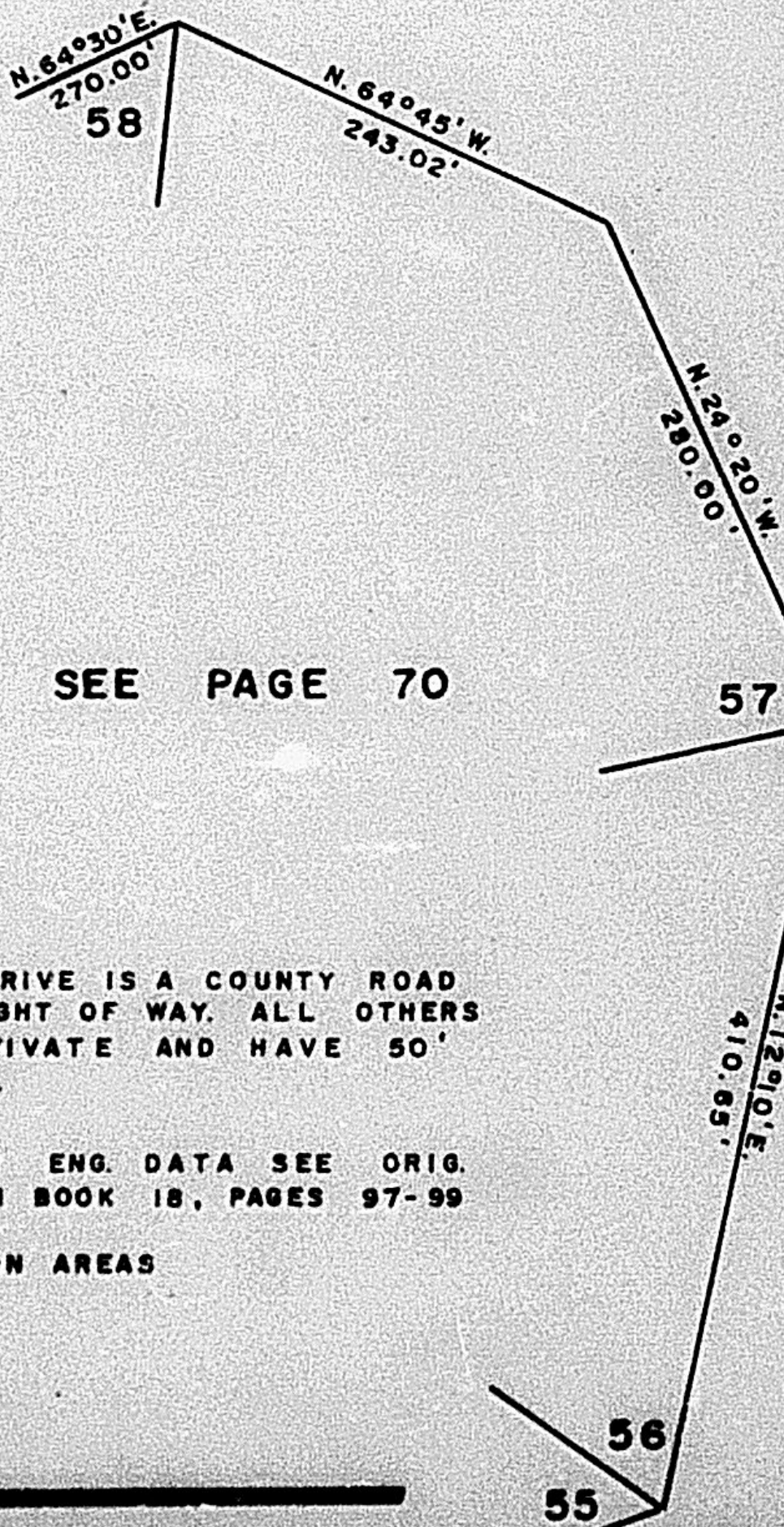
PREFIX: 23-065

EXCEPT WHERE OTHERWISE SHOWN
ALL LOTS OWNED BY
SUNRIDGE INC.

SEE PAGE
66

C. A. "J"

SEE 23-064-0003



SEE PAGE 70

MIDDLE FORK DRIVE IS A COUNTY ROAD
WITH A 66' RIGHT OF WAY. ALL OTHERS
ROADS ARE PRIVATE AND HAVE 50'
RIGHT OF WAYS.

FOR COMPLETE ENG. DATA SEE ORIG.
DED. PLATS IN BOOK 18, PAGES 97-99

FOR ALL COMMON AREAS
SEE PAGE 64

23

55

C. A. "J"
SEE 23-064-0003

SEE PAGE
67